

Hypolobocera guayaquilensis (Decapoda: Pseudothelphusidae): a New Crab Intermediate Host of *Paragonimus mexicanus* in Manabí Province, Ecuador

Manuel Calvopina¹, Daniel Romero-Alvarez², Melina Rendon³, Hidekazu Takagi⁴, Hiromu Sugiyama^{5,*}

¹OneHealth Group, Escuela de Medicina, Facultad de Ciencias de la Salud, Universidad de las Americas (UDLA), Quito, Ecuador; ²Department of Ecology and Evolutionary Biology-Biodiversity Institute, University of Kansas, Lawrence, Kansas, USA; ³Facultad de Ciencias Biológicas, Universidad Central del Ecuador, Quito, Ecuador; ⁴Department of Microbiology and Immunology, Aichi Medical University School of Medicine, Aichi, Japan; ⁵Department of Parasitology, National Institute of Infectious Diseases, Tokyo, Japan

Abstract: To determine that *Paragonimus* sp. is actively transmitted in a tropical area of the Pacific region of Ecuador where human cases of pulmonary paragonimiasis have recently been documented, a total of 75 freshwater crabs were collected from 2 different streams in the Pedernales area of Manabí Province, Ecuador. All collected crabs were identified as *Hypolobocera guayaquilensis* based on morphological characteristics of the male gonopods. The hepatopancreas of each crab was examined by compressing it between 2 glass plates followed by observation under a stereomicroscope. Excysted *Paragonimus* metacercariae were detected in 39 (52.0%) crabs and their densities varied from 1 to 32 per infected crab. There was a positive relationship between crab size and metacercarial density. Sequences of the second internal transcribed spacer region of the ribosomal RNA gene of the *Paragonimus* metacercariae obtained in this study were identical to those of *Paragonimus mexicanus* deposited in the DDBJ/EMBL/GenBank database. Thus, the present study is the first to confirm that the crab species *H. guayaquilensis* is the second intermediate host of *P. mexicanus* in Manabí Province, Ecuador. Because this crab might be the possible source of human infections in this area, residents should pay attention to improper crab-eating habits related with a neglected parasitic disease, i.e., paragonimiasis.

Key words: *Paragonimus mexicanus*, *Paragonimus kellicotti*, *Hypolobocera* sp., crab, intermediate host, trematode, lung fluke, food-borne disease, PCR-RFLP, Ecuador

INTRODUCTION

Paragonimus species are dispersed globally, but are most frequently found in Asia, Africa, and the Americas, where nine of about 50 nominal species are known to infect humans. In the USA, *Paragonimus kellicotti* is known to cause human illness, while *Paragonimus mexicanus* is accepted as a pathogenic species in Central and South American countries [1-3]. The metacercariae of *P. mexicanus* are unique in lacking a cyst wall, thus being very motile inside the body of crab hosts [4]. Recent research on the scanning electron microscope-based morphological and molecular features of *Paragonimus* metacercariae from Mexico has evidenced *P. mexicanus* as a species complex,

and *P. ecuadoriensis* was recognized as possible cryptic/sibling species [5].

In Ecuador, *P. ecuadoriensis* was described as a new species based on the distinct morphology of its ovary and testis in relation to that of *P. mexicanus*, *Paragonimus inca*, and *Paragonimus peruvianus* [6]. However, further comparative studies revealed that *P. ecuadoriensis* is a junior synonym of *P. mexicanus* [4,7]. In Manabí Province, adult parasites obtained from experimentally infected animals showed similar morphological characteristics to *P. mexicanus* [3]. In Esmeraldas Province, bordering Manabí, isolated metacercariae were also identified as *P. mexicanus* by sequencing the second internal transcribed spacer (ITS2) region of ribosomal RNA gene [2].

Two siblings showing pulmonary symptoms such as productive coughs with bloody sputa were seen as outpatients in a hospital in Quito. They came from the Pedernales area in Manabí Province and had a history of consuming undercooked freshwater crabs captured in tributaries of the Cheve River. Accordingly, they were both diagnosed with pulmonary

•Received 4 December 2017, revised 22 March 2018, accepted 2 April 2018.

*Corresponding author (hsugji@nih.go.jp)

© 2018, Korean Society for Parasitology and Tropical Medicine

This is an Open Access article distributed under the terms of the Creative Commons Attribution Non-Commercial License (<http://creativecommons.org/licenses/by-nc/4.0>) which permits unrestricted non-commercial use, distribution, and reproduction in any medium, provided the original work is properly cited.

paragonimiasis and then successfully treated. The discovery of these cases prompted us to carry out an intensive field survey around the Cheve River to determine (1) the presence of active transmission of *Paragonimus* in the area, (2) the *Paragonimus* sp. involved, and (3) the identification of crab hosts and their respective infection rate, which are presented in this study.

MATERIALS AND METHODS

Study site and crab collection

Freshwater crabs, *Hypolobacera guayaquilensis*, were collected by local people in August 2011 in 2 tributary streams of the Cheve River flowing through the Pedernales area of Manabí Province, northwestern Pacific Coast of Ecuador (Fig. 1). This region, located between 120 and 500 m above sea level, and at latitude 0.138633° N and longitude 79.874267° W, is a seasonal green forest of the Equatorial Pacific Coast Range in Chongon-Colonche Mountains. Selected geographical areas are dedicated to agriculture and cattle ranching [8].

To collect crabs, an active search was performed in advance in the 2 tributaries of the Cheve River, which descends from the mountains. Shallow and slowly flowing streams with rocky and muddy areas are the typical habitats where crab burrows are found. Collected crabs were transferred to the laboratories in Quito and maintained alive in 20-L plastic containers with 2 L of river water at about 25°C (room temperature) until examined.

Examination of crabs for *Paragonimus metacercariae*

The crabs were sacrificed using thermal shock by immersing them in water at about 2°C for 10 min [9]. Then, the genitalia of each crab was examined for gender and species identification. Next, the maximum width of the carapace was measured using a caliper. After that, the carapace was removed from the posterior end of the body and only the hepatopancreas was removed as previously described [10]. The hepatopancreas was finally compressed between 2 glass plates (6 × 10 × 0.2 cm), which were examined under a dissecting microscope (CRX-32, Olympus, Tokyo, Japan). When *Paragonimus metacercariae* were detected, the glass plate was carefully removed to recover the metacercariae using teasing needles or tweezers. The isolated metacercariae were transferred into a Petri dish containing physiological saline solution using a capillary pipet. After taking photographs under a microscope (DP71, Olympus), *Paragonimus metacercariae* were preserved in 70% ethanol for molecular analysis.

Molecular identification of metacercariae

The molecular characterization of the metacercariae was performed by DNA isolation, amplification of the ITS2 region by PCR, and PCR-restriction fragment length polymorphism (PCR-RFLP); all processed material was sequenced as previously described [9]. Specifically, the primers used for PCR amplification and sequencing were 3S (forward, 5'-GGTACCG-GTGGATCACTCGGCTCGTG-3'; [11]) and A28 (reverse, 5'-GGGATCCTGGTTAGTTTCTTTTCTCCGC-3'; [12]). The

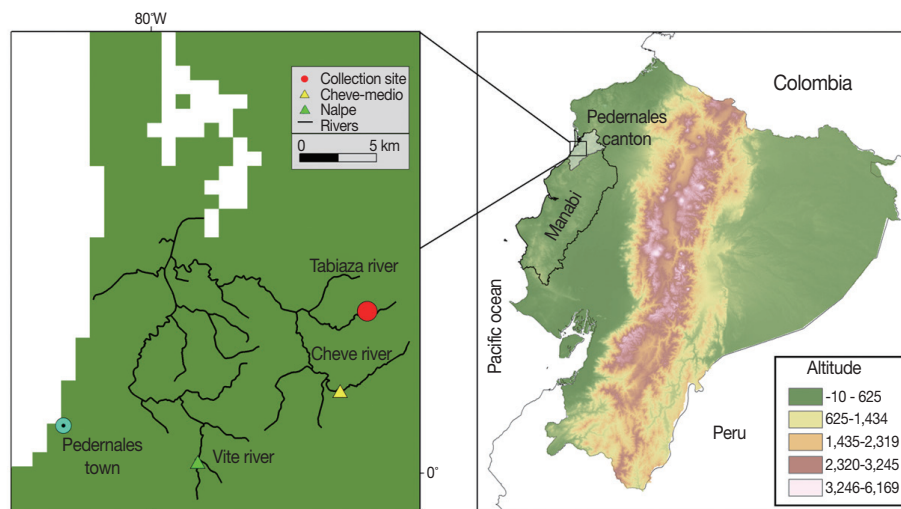


Fig. 1. Map of the study area in the Pedernales area, Manabí Province, Ecuador. The Cheve River, collection site, and Cheve Medio community are indicated in the left panel. Cheve Medio is located -20 km inland from nearby Pedernales on the coast of the Pacific Ocean.

PCR amplification was conducted using 0.25 μM of each primer and 2.5 U of Phusion High-Fidelity DNA Polymerase (Thermo Fisher Scientific, Waltham, Massachusetts, USA). The PCR was carried out on a thermal cycler (TaKaRa PCR Thermal Cycler Dice Gradient, Takara Bio, Shiga, Japan), with 30 cycles of 98°C for 10 sec, 55°C for 10 sec, and 72°C for 15 sec. An initial denaturation and final extension were performed at 98°C for 30 sec and at 72°C for 7 min, respectively. For the PCR-RFLP, 10-μl portions of the amplified products were treated with 5 U of the restriction enzyme *Hinc* II (New England Biolabs, Ipswich, Massachusetts, USA) at 37°C for 1 hr. Then, the amplicons with or without enzymatic treatment were separated by electrophoresis on 2% (w/v) agarose gels. All amplified products were sequenced using the corresponding primers and the BigDye Terminator v3.1 Cycle Sequencing Kit (Thermo Fisher Scientific) on an automated sequencer (3730xl DNA Analyzer, Thermo Fisher Scientific). Sequences were aligned and compared using GENETYX-Win software (Ver. 13, Genetyx Co., Tokyo, Japan). Following the procedures described above, we also processed metacercariae of *P. kellicotti* isolated from crayfish collected in Missouri, USA [13], for comparison purposes.

Statistical analyses

A Poisson regression was performed to analyze the relationship between carapace size and the number of *Paragonimus* metacercariae per crab. We tested for a non-zero-slope term (the measure of effect) using a likelihood ratio test. Differences between gender and infection and between carapace size (quartiles) and infection were determined using a Chi-square test. All analyses were performed in R software (<https://www.r-project.org/>) considering α = 0.05.

Ethics

Ethical approval of the study was given by the Ethics Committee of the Universidad Central del Ecuador (License number LEC IORG 0001932, FWA 2482, IRB 2483.COBI-AM-PHI-0064-11).

RESULTS

Of a total of 75 crabs examined, 50 were males (66.7%) and 25 were females (33.3%). All male crabs had gonopods with morphological features characteristic *H. guayaquilensis*. The average carapace size of the 75 crabs was 3.5 cm (± 1.18 cm, SD), ranging from 1.3 to 5.7 cm. Of the 75 crabs, 39 (52.0%) were infected with *Paragonimus* metacercariae. Of these crabs, 24 (32.0%) were males and 15 (20.0%) were females; no statistically significant relationship was detected between crab gender and metacercarial presence (*P* = 0.46; Table 1).

All metacercariae were excysted, dorso-ventrally flattened, and very motile under the microscope. The excretory bladder was clearly observed in the midline of each metacercarial body, between the right and left intestines, which was yellow in color and connected to the oral sucker through the pharynx. These morphological features were in accordance with those of *P. mexicanus* (Fig. 2).

Using PCR amplification, ITS2 products of about 520 base pairs (bp) were generated from the DNA samples prepared from the excysted metacercariae (Fig. 3; lane 1). The sequence analysis of the PCR amplicons revealed that the amplified product was 461 bp (without primer sequences). The sequences obtained were identical to those previously obtained *P. mexicanus* metacercariae (DDBJ/EMBL/GenBank accession

Table 1. Prevalence of *Paragonimus mexicanus* metacercariae according to crab gender and carapace size group

	No. (%) of crabs			Chi ²	Degrees of freedom	P-value
	Total	Positive	Negative			
Crab gender						
Male	50 (66.7)	24 (32.0)	26 (34.7)	0.54	1	0.46
Female	25 (33.3)	15 (20.0)	10 (13.3)			
Overall	75 (100)	39 (52.0)	36 (48.0)			
Carapace size (cm)						
1.3-2.9	19 (25.3)	5 (6.7)	14 (18.7)	8.96	3	0.03 ^a
3-3.5	20 (26.7)	10 (13.3)	10 (13.3)			
3.6-4.4	20 (26.7)	12 (16.0)	8 (10.7)			
>4.4	16 (21.3)	12 (16.0)	4 (5.3)			
Overall	75 (100)	39 (52.0)	36 (48.0)			

No difference in the infection rate was found between genders, but significant difference was found among carapace size groups.

^aSignificance = *P* < 0.05.



Fig. 2. Photomicrograph of *Paragonimus* metacercariae. Metacercariae isolated from the hepatopancreas of the crab *Hypolobocera guayaquilensis* lack cyst walls.

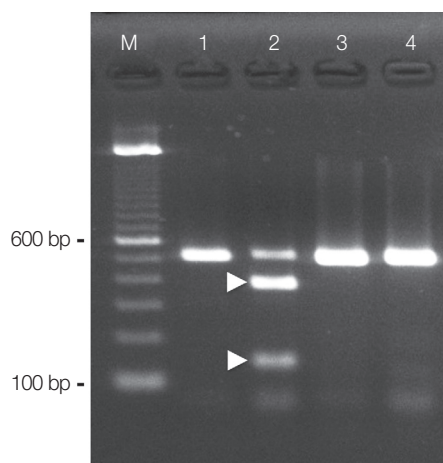


Fig. 3. Species identification by PCR-RFLP. PCR products from the ITS2 region of the nuclear ribosomal RNA gene were obtained from metacercariae of *Paragonimus mexicanus* (lane 1 and lane 2) and *Paragonimus kellicotti* (lane 3 and lane 4). The restriction endonuclease *Hinc* II used for RFLP digested the amplicons from *P. mexicanus* (lane 2, showing 2 fragments, 380 bp and 140 bp, arrow heads), but not the amplicons from *P. kellicotti* (lane 4, showing an undigested single fragment of 520 bp).

number: AB308377) and eggs (AB308378) occurring in Ecuador [14]. Therefore, the nucleotide sequence obtained in this study has been deposited as the metacercarial stage of *P. mexicanus* in the DDBJ/EMBL/GenBank database under the accession number LC317061.

Species discrimination by RFLP of the PCR amplicons obtained from the excysted metacercariae of *P. mexicanus* using the endonuclease *Hinc* II resulted in 2 fragments of expected sizes (about 380 and 140 bp; Fig. 3; lane 2). Similarly, ITS2

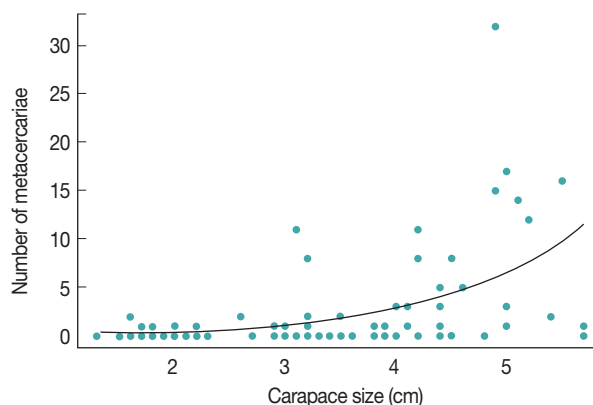


Fig. 4. Relationship between carapace size and number of metacercariae. We found a significant positive relationship between the number of metacercariae (blue dots) and carapace size ($P < 0.001$; intercept = -2.42, standard error = 0.34; slope = 0.86, standard error = 0.074). The black curve represents the expected number of metacercariae (based on crab carapace size) under the Poisson regression model.

products of about 520 bp were also generated from the DNA samples prepared from *P. kellicotti* metacercariae (Fig. 3; lane 3). However, these amplicons remained undigested by *Hinc* II (Fig. 3; lane 4). We found no intraspecific variation among the RFLP patterns for any of the amplicons ($n = 5$).

The percentage of infection within groups of crabs with similar carapace size was significantly different ($P = 0.03$; Table 1). A higher infection rate was observed in crabs with a carapace width > 3.6 cm, and the highest number of infected crabs was found within 3.6-4.4 cm carapace size groups. The largest number of metacercariae was found in a single male crab measuring 4.3 cm, which had 32 metacercariae. The smallest crab of our sample was a female measuring 1.6 cm and had 2 metacercariae, whereas the largest crab was a female, measuring 5.7 cm, in which only 1 metacercaria was found. We found a statistically significant effect of carapace size on the number of metacercariae under the Poisson regression model (intercept = -2.42, standard error = 0.34; slope = 0.86, standard error = 0.074, $P < 0.001$; Fig. 4).

DISCUSSION

The results of this study confirm the presence of the lung fluke *P. mexicanus* in the Pedernales area in Manabí Province, Ecuador. Furthermore, the 2 children who were diagnosed with pulmonary paragonimiasis by sputum examination and successfully treated with praziquantel in Quito were autochtho-

nous cases infected in the Cheve community. The high rate of metacercarial infection found in crabs (52.0%) represents a potential risk for residents and visitors for acquiring *P. mexicanus* infections because it is a common practice to eat raw or undercooked crabs in this region.

The crab, *H. guayaquilensis*, which has been reported from this study area [15] is reported here as a suitable second intermediate host for *P. mexicanus*, and this is a new host record. Previous studies have described 2 freshwater crab species in the same genus, namely *H. aequatorialis* and *H. chilensis* (formerly referred to as *Strengeria eigenmanni* and then *Pseudothelphusa chilensis*), as second intermediate hosts for *P. mexicanus* in Manabí Province [7]. Although, *P. ecuadoriensis* was described as the lung fluke species in Ecuador [6], it was later considered a junior synonym of *P. mexicanus* [4,7]. However, recent evidence has proposed that the individuality of *P. ecuadoriensis* should be reconsidered based on molecular and morphological evidence [5]. Further molecular studies are necessary to obtain a reliable consensus on the taxonomy of *P. mexicanus* and *P. ecuadoriensis* in Ecuador [5]. Based on the molecular methods used here (sequencing, and PCR-RFLP using *Hinc* II), we confirmed that the metacercariae examined belonged to *P. mexicanus*. The molecular region selected for PCR-RFLP did not produce an identifiable pattern in *P. kellicotti* from the USA and *P. caliensis* from Costa Rica [13,16], suggesting that PCR-RFLP using *Hinc* II can be used as a tool to discriminate *P. mexicanus* from these 2 other American lung fluke species, although *P. caliensis* specimens were unavailable for our analysis.

The infection rate of excysted metacercariae in crabs found here differs from that reported in previous studies performed in Manabí Province. For example, an infection rate of 100% was found in the crab *H. aequatorialis* in Jipijapa [6], whereas the infection rate was 16.1% in *H. chilensis* in Nalpe (Fig. 1) [10]. This difference in infection rates might be due to the different crab species acting as hosts. In addition, environmental factors, such as the deforestation that occurred over the years, might have changed the habitats of the reservoirs and intermediate hosts for *P. mexicanus*. Furthermore, the contamination of rivers with insecticides, fungicides, and other chemicals used by cattle ranches, coffee, cocoa, and African palm plantations, can directly affect the survival of the intermediate hosts, as mentioned in studies carried out in the neighboring Esmeraldas Province [10]. The high natural infection rate of 52% found in the present study might be related to the fact that primary forests in mountains and water sources of streams have

remained uncontaminated. The livelihood of the reservoir animals including the first and second intermediate hosts (a mollusk, and crustacean, respectively) might not be threatened, and thus the life cycle of *P. mexicanus* is properly maintained in the area surrounding the Cheve River.

A statistical difference in infection rate was found between crab groups of different carapace sizes (Table 1). Furthermore, the likelihood ratio test under the Poisson regression model showed a significantly positive relationship between crab size and number of metacercariae ($P < 0.001$, Fig. 4). These data suggest that large crabs are heavily infected with *P. mexicanus* in the Cheve River. This relationship was first described in Esmeraldas Province [10]. Larger crabs are more valuable as food by people because they have more meat. If the local residents maintain the habit of eating raw or undercooked crabs, the probability of finding more individuals with paragonimiasis might increase.

The high natural infection rate of crabs with *Paragonimus* metacercariae, the abundance of crabs in the area, the ease of their capture, and the habit of local residents of consuming raw or undercooked crabs represent potential risk factors for the acquisition of paragonimiasis. The dissemination and familiarization of the results of the present study by the public health government agencies is important for implementing preventive measures or programs. Physicians and health personnel must consider the diagnosis of paragonimiasis in patients with pulmonary symptoms coming from this area, and thus make an early diagnosis and a timely treatment.

ACKNOWLEDGMENTS

This study was supported by JSPS KAKENHI Grants (nos. 25305011 and 16H05820). We thank Dr. Ronald Guderian for reviewing the paper. We also thank Dr. Masatsune Takeda, Emeritus Professor of the National Museum of Nature and Science, Tsukuba, Japan, for his expert advice on the identification of the freshwater crabs, and Prof. John Kelly from the University of Kansas for his advice on statistical approaches. Further thanks to Dr. Peter U. Fischer and Prof. Gary J. Weil of the Washington University School of Medicine, St. Louis, USA, and Prof. Timothy P. Yoshino of the University of Wisconsin, School of Veterinary Medicine, Madison, USA, for their critical support in collecting samples and invaluable suggestions. Last but not the least, we thank Dr. Stefan Hannus, Intana Bioscience GmbH, Planegg, Germany, for his assistance in manu-

script translation and discussion.

CONFLICT OF INTEREST

We have no conflict of interest related to this work.

REFERENCES

1. Acha P, Szyfres B. Zoonosis y Enfermedades Transmisibles Comunes al Hombre y a los Animales: Volumen III. Parasitosis. 3rd ed. Washington DC, USA. Organización Panamericana de la Salud. 2003, pp 158-164.
2. Iwagami M, Monroy C, Rosas MA, Pinto MR, Guevara AG, Vieira JC, Agatsuma Y, Agatsuma T. A molecular phylogeographic study based on DNA sequences from individual metacercariae of *Paragonimus mexicanus* from Guatemala and Ecuador. *J Helminthol* 2003; 77: 33-38.
3. Waikagul J, Lazo R, Cornejo E, Lazo M, Llaguno M, Barrezueta J, Llaguno M, Botta M, Yoonuan T, Akahane H. *Paragonimus* infection in Pedernales, Ecuador. *Bull Central Res Inst Fukuoka Univ, Series E, Interdisc Sci* 2003; 1: 259-273.
4. Miyazaki I. Paragonimiasis Mexicana. In Miyazaki ed, An illustrated book of helminthic zoonoses. Tokyo, Japan. Southeast Asian Medical Information Center. 1991, pp 125-129.
5. López-Caballero J, Ocegüera-Figueroa A, León-Règagnon V. Detection of multiple species of human *Paragonimus* from Mexico using morphological data and molecular barcodes. *Mol Ecol Resour* 2013; 13: 1125-1136.
6. Voelker J, Arzube R. Ein neuer Lungenegel aus der Küstenkordillere von Ecuador: *Paragonimus ecuadoriensis* n. sp. (Paragoninidae; Trematoda). *Tropenmed Parasit* 1979; 30: 249-263.
7. Calvopiña M, Romero D, Castañeda B, Hashiguchi Y, Sugiyama H. Current status of *Paragonimus* and paragonimiasis in Ecuador. *Mem Inst Oswaldo Cruz* 2014; 109: 849-855.
8. Ministerio del Ambiente del Ecuador (MAE). Sistema de Clasificación de los Ecosistemas del Ecuador Continental. Quito, Ecuador. Subsecretaría de Patrimonio Natural. 2012.
9. Sugiyama H, Singh TS, Rangsiruji A. *Paragonimus*. In Liu DY ed. Molecular Detection of Human Parasitic Pathogens. Florida, USA. CRC Press. 2013, pp 423-436.
10. Vieira JC, Blankespoor HD, Cooper PJ, Guderian RH. Paragonimiasis in Ecuador: prevalence and geographical distribution of parasitisation of second intermediate hosts with *Paragonimus mexicanus* in Esmeraldas Province. *Trop Med Parasitol* 1992; 43: 249-252.
11. Bowles J, Blair D, McManus DP. A molecular phylogeny of the human schistosomes. *Mol Phylog Evol* 1995; 4: 103-109.
12. Blair D, Agatsuma T, Watanobe T, Okamoto M, Ito A. Geographical genetic structure within the human lung fluke, *Paragonimus westermani*, detected from DNA sequences. *Parasitology* 1997; 115: 411-417.
13. Fischer PU, Curtis KC, Marcos LA, Weil GJ. Molecular characterization of the North American lung fluke *Paragonimus kellicotti* in Missouri and its development in Mongolian gerbils. *Am J Trop Med Hyg* 2011; 84: 1005-1011.
14. Calvopina M, Romero-Alvarez D, Macias R, Sugiyama H. Severe pleuropulmonary paragonimiasis caused by *Paragonimus mexicanus* treated as tuberculosis in Ecuador. *Am J Trop Med Hyg* 2017; 96: 97-99.
15. Takeda M, Sugiyama H, Kumazawa H, Romero-Alvarez D, Calvopina M. Recent collections of freshwater crabs from the Pacific and Amazonian regions of Ecuador, South America. *J Teikyo Heisei Univ* 2016; 27: 1-16.
16. Hernández-Chea R, Jiménez-Rocha AE, Castro R, Blair D, Dolz G. Morphological and molecular characterization of the metacercaria of *Paragonimus caliensis*, as a separate species from *P. mexicanus* in Costa Rica. *Parasitol Int* 2017; 66: 126-133.